

MODULAR PLANTER KITS LAYERED BOXLINE

BX-SML-SWS (SINGLE NOTCH) WEATHERING STEEL(SC20WS)
BX-SML-DWS (DOUBLE NOTCH) WEATHERING STEEL(SC20WS)
BX-LRG-SWS (SINGLE NOTCH) WEATHERING STEEL(SC20WS)
BX-LRG-DWS (DOUBLE NOTCH) WEATHERING STEEL(SC20WS)
BXS-EXT-WS WEATHERING STEEL(SC20WS)

ALSO AVAILABLE IN GALVANISED STEEL (SC20GS)

SOLD AS SET INCLUDING

(Per corner or extension piece)

- ✓ Connector plate (pre attached) with breakaway join plate

ACCESSORIES AND REQUIRED FIXINGS (NOT INCLUDED)

- ✓ 6 x Tek screws (12G x 16mm) per piece; Or
- ✓ 6 x pop rivets (4mm shaft) per piece
- ✓ Box Bracing Straps (plus 2 x Tek screws to attach a strap)

INSTALLATION INSTRUCTIONS

Each layer is 200mm tall. You can stack as many layers on top of each other as you like. All parts interconnect with one another to form one solid bed.

- 1 Slot two pieces together, having them face down for easier connection, and align the connector plate guide holes.
- 2 Fasten with Tek Screws or pop rivets using the pre-drilled holes.
- 3 Detach the snap off plate and use for the bottom edge join (Fig 1 Right). This is only done for the first layer. Further layers attach directly to each other. NB This plate once attached also provides a foot with holes for securing the bed down.
- 4 Slot in and join the other pieces in the same manner to complete first layer.
- 5 Further layers are then built on top, layers join together using the pre-drilled holes that self align instead of the snap off plate.

USE AS

- ✓ Feature beds of varying heights
- ✓ Retainers (closed shapes give strength)

IDEAL FOR

- ✓ Square/rectangular raised features
- ✓ Hard surfaces, i.e. rooftop gardens/decking
- ✓ Seats, benches or tables (create own top)
- ✓ Hidden fixings & bolt down capabilities

PREPARATIONS

When building the box bed, do so on a flat work surface. Create a level installation base for set up.

IMPORTANT: If you plan to use more than one extender, you need to buy the additional braces that run internally from one side to the other. This prevents the boxes from bulging out.

Tip: When you make a rectangle or square, make two halves first. When completed, combine the two halves.

Pro - tip: For a superior finish at the top, use Phillips truss head screws or pop rivets for the inside top connections that may be visible if looking close.

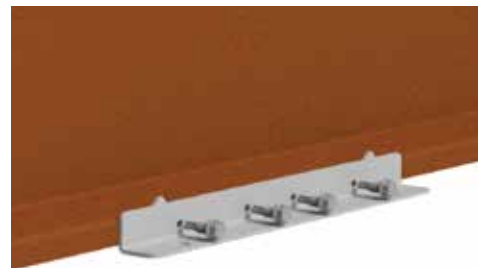
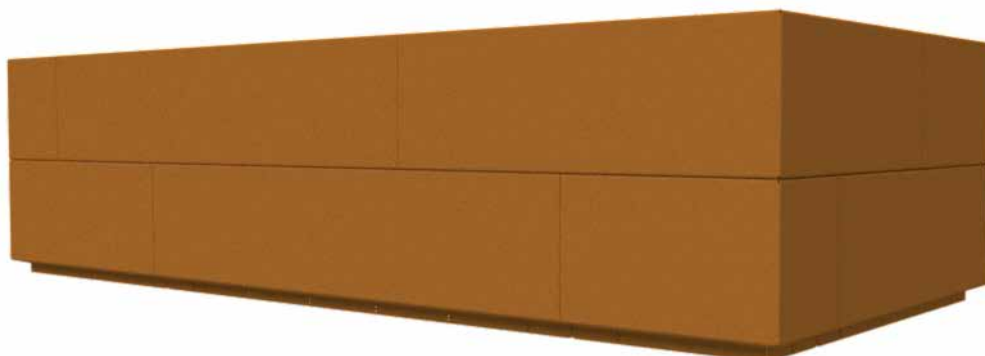


FIG 1 - JOINING AT THE BASE



LAYERED BOXLINE SYSTEM

You can make both squares and rectangles using our boxline pieces. Here's what you need to know.

The small and large corners have two marked versions. One with a single notch (S) and one with a double notch (D).

Single notch and double notch corners are combined to construct different square or rectangle beds.



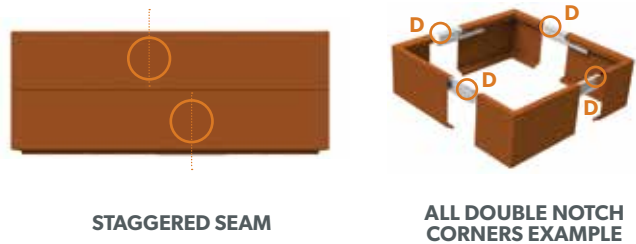
BUILDING A SQUARE

For a square a single layer is made of :

- ALL Single Notch corners; OR
- ALL Double Notch corners.

For additional layers (ie taller planters), alternate these with a single notch ONLY layer followed by a double notch ONLY layer and so on. This allows a staggered join seam like shown here.

Refer to the table on pg 23 to select what you need for your desired size planter.



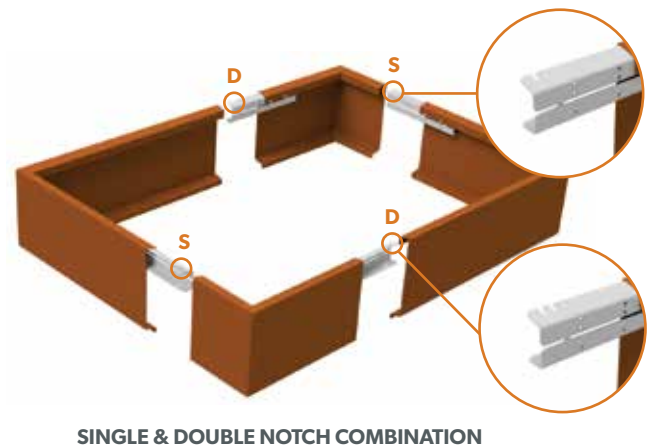
BUILDING A RECTANGLE

For this there are several options.

- If using 4 large corners OR 4 small corners, select 2 single notch and 2 double notch corners.
- If using 2 small corners and 2 large corners, select so that if both large corners are single notch then both small corners are double notch OR vice versa.
- If adding Extension Pieces, simply add to existing square or rectangle configurations.

NB: For A, switching from single to double notch between layers has no benefit (seams align either way), while for B, doing this will create a staggered seam.

Refer to the table on pg 23 to select what you need for your desired size planter.



LAYERED BOXLINE SYSTEM CONT.

FIXING YOUR PLANTER TO A HARD SURFACE

The bottom connector plate also acts as a securing foot. Secure the planter through the holes in the plate to a hard surface with bolts or twisted nails when required.



BRACING YOUR PLANTER

For beds with extender pieces bracing is recommended. This prevents the wall leaning out of line in longer beds. The universal bracing strap can be cut down at the marked fold lines to make the size of the span required. The brace is secured by screwing to the edge as shown here. (right)

Space the braces out, anything from 600 -900mm intervals is fine. Placing them close to the joins is ideal.

NB: The brace will cater to a 1250mm wide span. If your planter is wider than that, connect 2 braces to achieve the span required.



LAYERED BOXLINE CONFIGURATIONS

- For square configurations all single notch combinations are shown here. Switch between Double and Single Notch corners (in the same size) for additional layers.
- For rectangle configurations where all one notch type is ordered for one layer, switch to the alternative for the next layer.
- For rectangle configurations if alternate layers column is marked YES, you will be able to achieve a staggered seam pattern.

SIZE (SQUARE)	SMALL CORNER		LARGE CORNER		EXTENDER
	SINGLE NOTCH	DOUBLE NOTCH	SINGLE NOTCH	DOUBLE NOTCH	
500 mm	4				
800 mm	2		2		
1100 mm			4		
1400 mm	4				4
1700 mm	2		2		4
2000 mm			4		4
2300 mm	4				8
2600 mm	2		2		8
2900 mm			4		8
3200 mm	4				16
3500 mm	2		2		16
3800 mm			4		16
4100 mm	4				20
4400 mm	2		2		20
4700 mm			4		20
5000 mm	4				24
5300 mm	2		2		24
5600 mm			4		24

SIZE (RECTANGLE)	SMALL CORNER		LARGE CORNER		EXTENDER	ALTERNATE LAYERS
	SINGLE NOTCH	DOUBLE NOTCH	SINGLE NOTCH	DOUBLE NOTCH		
350 x 650	2	2				
350 x 1550	2	2			2	
500 x 1400	4				2	Yes
500 x 2300	4				4	Yes
500 x 3100	4				6	Yes
650 x 950	2		2			Yes
650 x 1250	2	2			2	
650 x 1850	2		2		2	Yes
650 x 2150	2	2			4	
800 x 1700	2		2		2	Yes
800 x 2600	2		2		4	Yes
800 x 3500	2		2		6	Yes
950 x 1250			2	2		
950 x 1550	2		2		2	Yes
950 x 2150			2	2	2	
1100 x 2000			4		2	Yes
1100 x 2900			4		4	Yes
1100 x 3800			4		6	Yes
1250 x 1550	2	2			4	
1250 x 1850			2	2	2	
1250 x 2450	2	2			6	
1550 x 1850	2		2		4	
1550 x 2150	2	2			6	
1550 x 2750	2		2		6	Yes